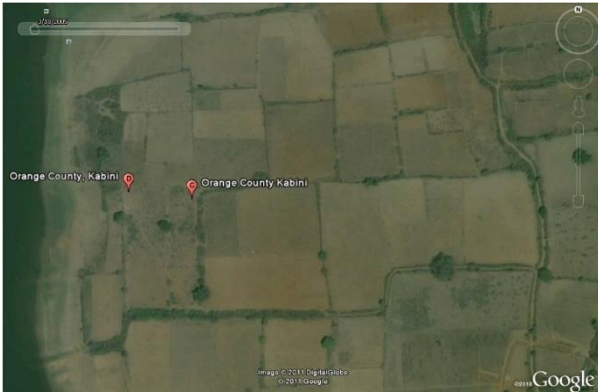


## Evolve Back Kabini, Nagarhole Restoring Landscape and Promoting Conservation



*Denuded landscape restored - before and after restoration with indigenous planting and the creation of a water body.*

Making a positive contribution to the local ecosystem and conservation of natural diversity lies at the heart of Orange County's responsible tourism policy, the parent company of Evolve Back Kabini. A plot of barren farmland with no green cover acquired in 2005 has been transformed by planting only local trees and plants with landscaping emulating the local terrain allowing bird, insect and small animal life to be restored. The resort has created an exceptional educational experience through their on-site Kabini Interpretation Centre - the Kabini Museum, Butterfly Sanctuary, Lily Pond and Kuruba Trival Hut designed to give a unique insight into a beautiful, environmentally and culturally fragile region.



*The Kabini Interpretation Centre - an exceptional educational resource for guests.*

Guests are briefed by the resort's team of in-house naturalists on etiquette when visiting the park and given inspiring talks on nature. Low carbon opportunities to explore the natural environment and its inhabitants beyond the jeep and boat safari are provided on foot, by bullock cart and coracle.



*Low carbon opportunities to explore nature.*

Daily Eco Walks and classes enabling guests to make bags from recycled materials are offered to help spread the resort's good sustainability practice into their lives.



*Guests encouraged to go eco through tours and classes.*



*Conservation classes at the resort for local children.*

The expertise of the resort's in-house naturalist is utilised to spread conservation awareness amongst the broader community. Conservation classes at the resort are held for children from their adopted school. The children are taken on wildlife safaris twice a year to inspire care for the fragile environment and the wildlife it harbours.



*Giving local children access to their natural heritage.*



*Building conservation awareness among young adults.*

Educational sessions are also run for young adults from surrounding villages on sustainable practices.



*Clearing invasive weeds.*

The resort conducts periodic visits to local villages to weed out parthenium and eupatorium, invasive weeds, to enable beneficial vegetation to grow. It assists the Forest Department in periodic drives to clean Nagarhole National Park. Its staff also have clean-up drives in surrounding villages removing plastic and other waste to set an example to the local community.



*Clean up drives in the National Park....*



*... and in local villages*