



THE CERTIFICATION PROCESS ACCOMMODATION PROVIDERS

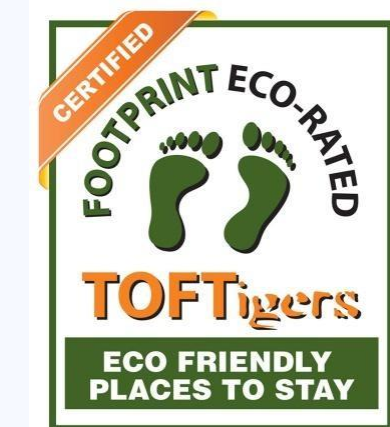
WHY JOIN THE TOFTIGERS EC



Gaining a certificate provides your guests, visitors, buyers, clients, staff, Government and park officials and the travelling public at large an independently audited rating of sustainability in your operations.

Its aim is to enhance your operational quality, improve your profitability and give you broader market appeal

Certification is a powerful & cost-effective medium for highlighting your accommodation among discerning trade buyers and prospective visitors



- Recognised by the UN backed Global Sustainable Tourism Council, whose International standards we meet.
- First in South Asia and the first to be wholly focused on the nature friendly accommodation.
- lots of added business benefits for those who achieve the standards.
- Enhanced credibility for your business.





**Netherland's based Green Online Travel Agent
bookdifferent.com states:**

TOFTigers certification has been given a 100% eco-label performance score. It's the most comprehensive eco-label in the world. Certified Providers get our top Green label and top ranking.

Lonneke Dekort CEO

WHAT OTHER OTA'S USE OUR CERTIFICATION



Used by 65% of
the global
market

A FEW OF THE LEADERS OF WHO HAS BEEN A PART OF OUR CERTIFICATION PROCESS



We have certified 76 accommodation providers

**All TOFTigers ITO & DMC members commit to using
certified providers**



SO HOW DO YOU GO ABOUT GETTING ECO-CERTIFICATION



1) CALL THE GREEN TEAM

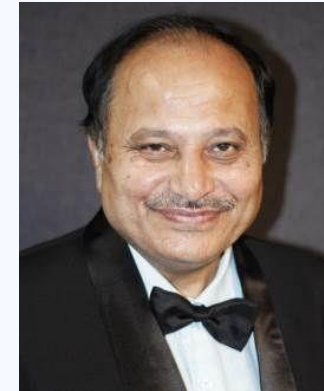


Our independent environmental team, Sycom Projects will talk you through the process. The costs and your initial application

WHO CARRIES OUT THE CERTIFICATION?



- Sycom Projects Ltd, based in New Delhi are the professional and independent assessors of the Certification scheme.
- As professionally Qualified International environmental auditors and consultants, they are fully trained to carry out the certification to the highest International standards.
- They carry out the assessment on TOFTigers behalf, prepare the reports and recommend certification as per their assessment.
- Collectively they have done over 300 Accommodation assessments over the last 10 years.



WHICH CERTIFICATION IS APPLICABLE



PUG

Nature focused accommodation providers who seek to provide their visitors with a principally nature based travel experiences



FOOTPRINT

Accommodation providers whose clients not wholly nature focused, but enjoying leisure, family or corporate time within any destination, be it in a natural, rural or an urban landscape.

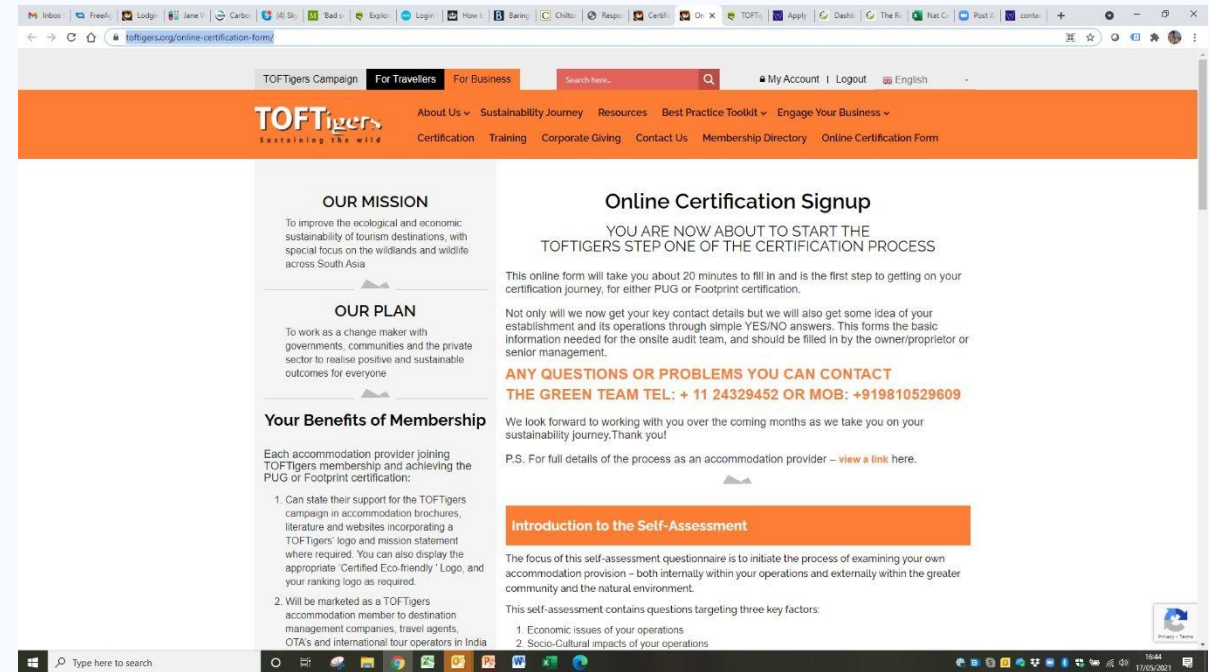
6 KEY STEPS TO PROCESS

1) Online sign up process

This is a 10 minutes online question and answers process done by the owner or most senior manager

on <https://www.toftigers.org/online-certification-form/>

- About you & your company
- Your management and
- Your accommodation

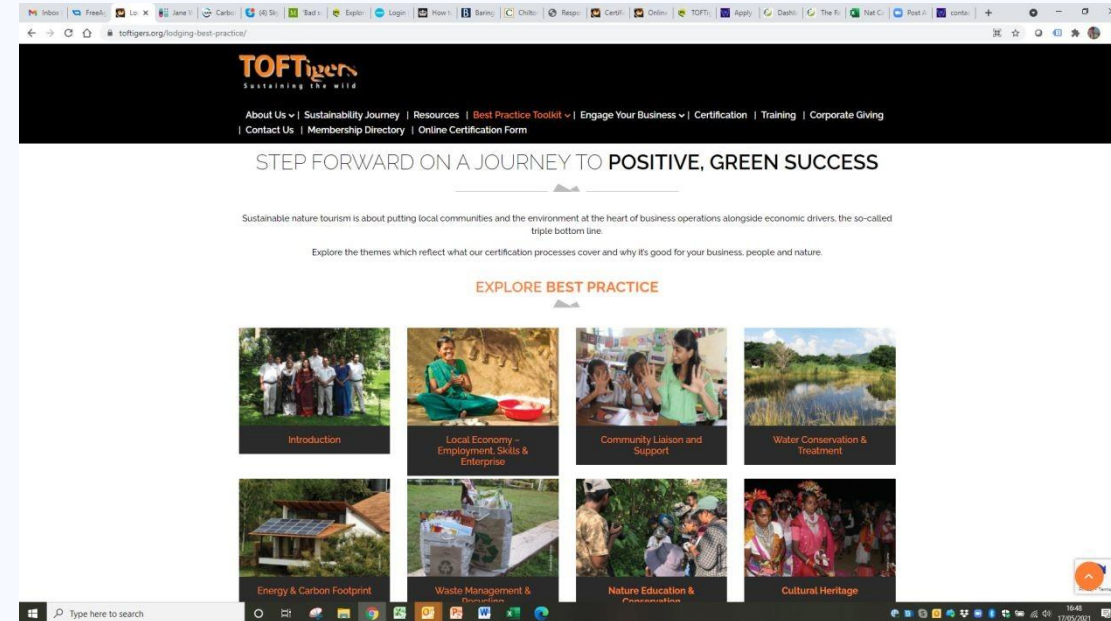
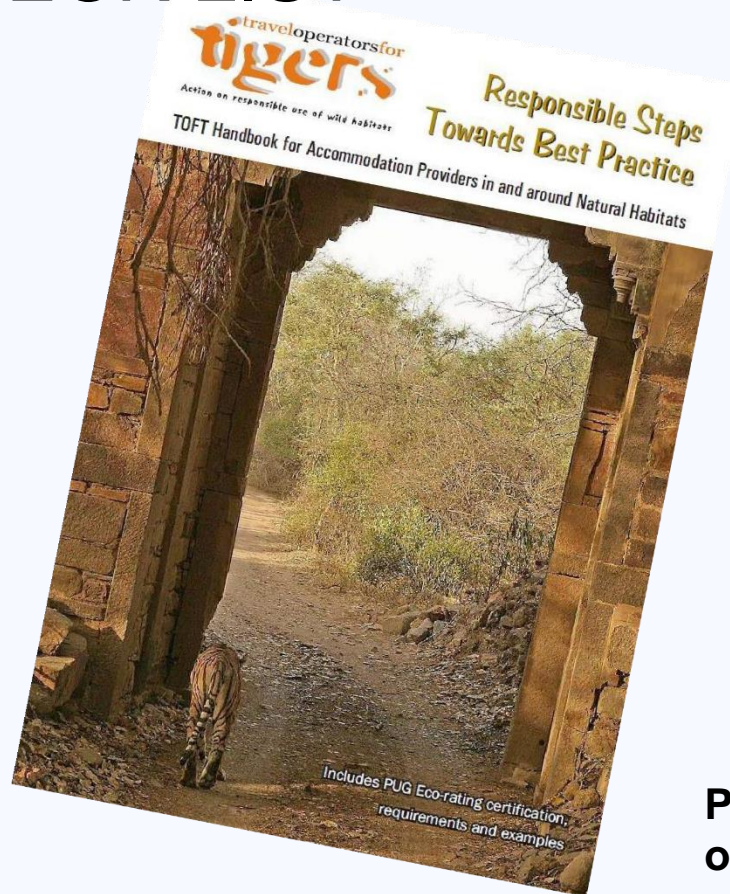


2) ARRANGE A DATE FOR THE 'GREEN TEAM' TO VISIT



- You should be operational
- Will take a full day (the Team will stay at your property and will do the assessment)

3) PREPARE FOR THE GREEN TEAM'S USING CHECK LIST



Prepare your staff and accommodation with reference to operational steps and good examples from other accommodation from our online Best Practice Toolkit.

4) Physical VISIT

Our Green Team will undertake a comprehensive interview and show round of your accommodation service and product while staying at your property

THEY LOOK AT:

1) Your economic operations



Employment
& Local Purchasing



Workforce Training &
community support



Product
development

2) ASSESS YOUR LOCAL AREA OPERATIONS



Cultural
Interpretation



Local cooperation &
development



Construction &
Aesthetics



Local
support

3) YOUR OPERATION'S ENVIRONMENTAL IMPACTS



Landscaping
& restoration



Water use &
treatment



Energy & pollution



Disposal &
waste
recycling

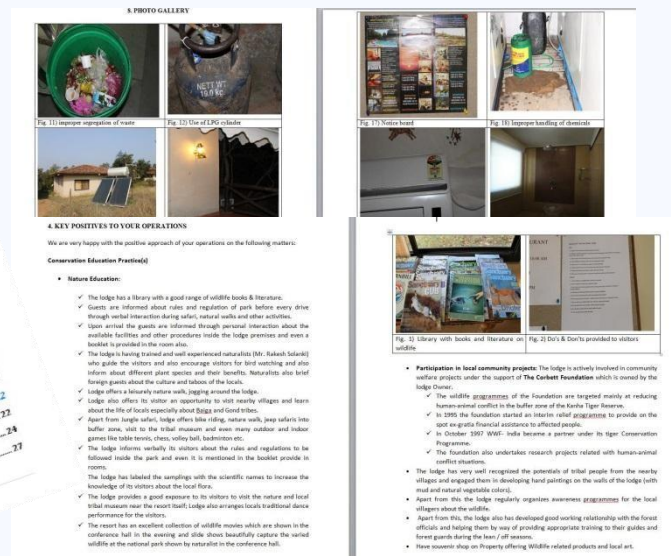


Lighting efficiency &
use



Chemical
use
& storage

A confidential report is written and presented to you after one month



5) GRANTED CERTIFICATION BY TOFTIGERS FOR 3 YEARS



WHAT IF YOU DO NOT PASS MINIMUM STANDARDS?

- We want everyone to pass. Our aim is to help everyone to gain our minimum rating and ultimately help everyone reach for our highest rating
- Our aim is to give you advice and support - through our confidential report and the green team's visit - to get the Certification.
- Nobody is perfect or good at everything – it's about assessing your whole operation.
- Our aim is to applaud your good points and highlight where you can do better.
- If you do fail - we tell you what you need to do to pass – and then you can invite us back to review your efforts.



WHAT THE CERTIFICATION IS NOT



- We do not assess 'comfort levels'. You can be a simple homestay or a luxury lodge – and still get the best rating
- The age of your property is not an issue. It can be old and historic or new and just built – but it does need to have been in operation for a year to be audited.
- We can also advise on new projects before building begins – ensuring a better start

CERTIFICATION FEES

The PUG/ Eco Footprint fees structure is based on the number of rooms and the published tariff rate (It's based on lowest published twin/double category of room per night rack rates including tax and meals). *(For full details and costs of the audit see <https://www.toftigers.org/certification/>)*

Payment and Service Tax:

Audit Fees as applicable would be exclusive of GST (GST Payable extra). The payment schedule is 100% of the Fees payable before assessment.

Travel Expenses

Travel cost is not included in the certification fee. Will be added later.



CERTIFICATION AND MEMBERSHIP PRICING

Certification fees:

- Range from INR 4800 to INR 32400 for under 10 rooms*
- from INR 17600 to INR 41600 for under 20 rooms*
- from INR 22000 to INR 60000 for under 35 rooms *
- from INR 36800 to INR 80000 for under 50 rooms*

** based on your lowest published twin room rate tariffs.*

Membership Fee

- Based on your lowest published twin room rate tariffs.

FAQ'S



- **Is it necessary to be assessed to becoming a TOFTigers member?**
As an accommodation provider you become a member first - but the tangible benefits only start when you have been granted certification.
- **Do we have to fill in both the agreement form as well as the Online Auditing form?** No. One or the other.
- **Do they have to pay the Certification fee and Membership fee separately ?** Yes. Annual membership is to TOFTigers India.

The PUG/ Eco Footprint certification fee is agreed and separately invoiced by Sycom Projects, the independent Green team, and is sent out with request to pay 100% before they arrive to do the assessment.

FAQ'S CONTINUED

- **What about the 50% refund after getting audited in the first year.**
This will be deducted off your next year's membership fee - probably the easiest way to account for it.
- **What if they don't get audited in Year one?**
Lose your membership fee reduction.





**BECAUSE DOING GOOD TOURISM
BUSINESS IS GOOD FOR YOUR
BUSINESS AND FOR SAVING OUR
PLANET**





TO CONTACT ME: We are here to help you

Join us now
Delhi Office :

Ritu Makhija, Director Sustainability

ritu.makhija@toftindia.org

Tel: +91 9810117090(Whatsapp)/+918076309422

admin@toftindia.org

Tel: + 11 41006608